

# General Statements

### III. GENERAL STATEMENTS

2010

#### A. Calendar of 2010 Program Year

January	February	March	April	May	June	July	August	September	October	November	December
---------	----------	-------	-------	-----	------	------	--------	-----------	---------	----------	----------

#### Competition

	Winter Games 9 <sup>th</sup> -11 <sup>th</sup> Jackson			Summer Games Laramie 20 <sup>th</sup> -22 <sup>nd</sup>		National Games Lincoln, NE July 18-24 <sup>th</sup>	Golf Tournament August 9 <sup>th</sup> Softball Tournament August 21 <sup>st</sup>		Fall Tournament 13-15 <sup>th</sup> Casper		
		Summer Games Registration sent			Golf Tourney Registration sent Softball Registration sent	Fall Tournament Registration sent				Winter Games Registration sent	
Area Winter Games			Area Summer Games					Area Fall Tournaments			

#### Training

		Summer Sports Coaches Training	National Games Training Camp			Fall Sports Coaches Training					Winter Sports Coaches Training
Winter Sports Training		Summer Sports Training			Unified Sports Golf Training Softball Training		Fall Sports Training			Winter Sports Training	

#### Communications \* Note all Newsletters will be sent via e-mail in 2010

Program Update		Program Update		Program Update		Program Update		Program Update		Program Update	
					Newsletter						

#### Finance & Fundraising

Jackalope Jump	Jackalope Jump	Jackalope Jump		Law Enforce- ment Torch Run	Cops & Jocks			World's Largest Truck Convoy		Festival of Trees	
Area Accounts due for Audit			Area & Local account reports			Area & Local account reports			Area & Local account reports		

## B. Eligibility Statement

### General Statement

Special Olympics training and competition is open to every person with intellectual disabilities who is at least eight years of age and who registers to participate in Special Olympics as required by the General Rules.

### Age Requirement

There is no maximum age limitation for participation in Special Olympics. The minimum age requirement for participation in Special Olympics competition is eight years of age. A program may permit children who are at least six years old to participate in age-appropriate Special Olympics training programs, or in specific (and age-appropriate) cultural or social activities offered during the course of a Special Olympics event.\* Such children may be recognized for their participation in such training or other non-competitive activities through certificates of participation, or through other types of recognition not associated with participation in Special Olympics competition. However, no child may participate in a Special Olympics competition (or be awarded medals or ribbons associated with competition) before his or her eighth birthday.

\*The Young Athlete Program is now available for children between the ages of 2 ½ and 7 to introduce this population to sports activities prior to competition. Please refer to Section VIII Program Activities for more information.

### Identifying Persons with Intellectual Disabilities

A person is considered to have a intellectual disability for purposes of determining his or her eligibility to participate in Special Olympics if that person satisfies any one of the following requirements:

- 1) The person has been identified by an agency or professional as having a intellectual disability as determined by their localities; or
- 2) The person has a intellectual delay, as determined by standardized measures such as intelligent quotient or "IQ" testing or other measures which are generally accepted within the professional community as being a reliable measurement of the existence of a intellectual delay; or
- 3) The person has a closely related intellectual disability. A "closely related intellectual disability" means having functional limitations in both general learning (such as IQ) and in adaptive skills (such as in recreation, work, independent living, self-direction, or self-care).

However, persons whose functional limitations are based solely on a physical, behavioral, or emotional disability, or a specific learning or sensory disability, are not eligible to participate as Special Olympics athletes, but may volunteer for Special Olympics.

### Participation by Individuals with Down Syndrome who have Atlanto-axial Instability

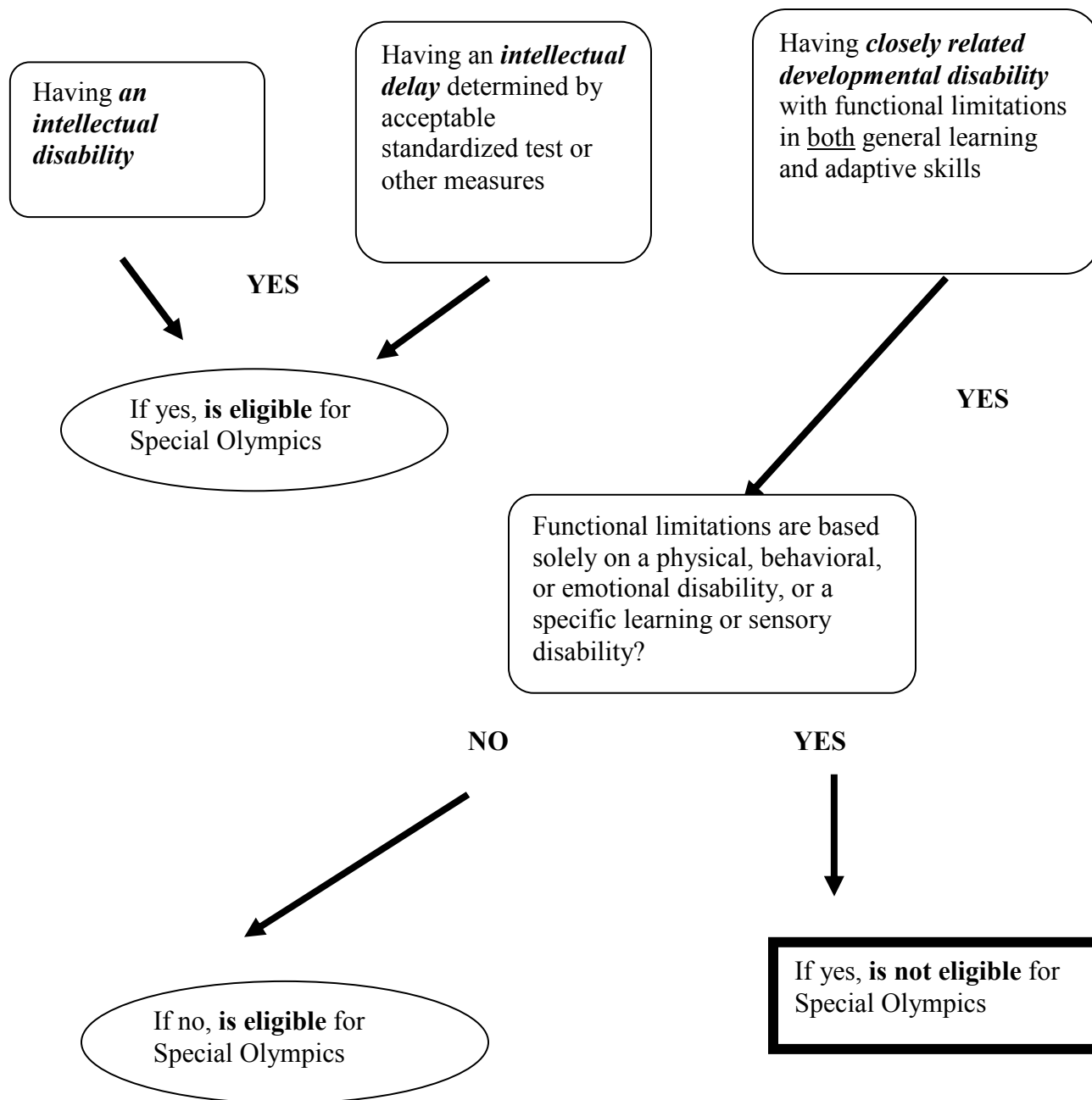
In light of medical research indicating that up to 15% of individuals with Down syndrome have a mal-alignment of the cervical vertebrae C-1 and C-2 in the neck known as Atlanto-axial instability, exposing them to possible injury if they participate in activities that hyperextend or radically flex the neck or upper spine, all programs must take the following precautions before permitting athletes with Down syndrome to participate in certain physical activities:

- 1) Athletes with Down syndrome may participate in most Special Olympics sports training and competition, but shall not be permitted to participate in any activities which, by their nature, result in hyper-extension, radical flexion or direct pressure on the neck or upper spine, unless the requirements of subsections (2) and (3) below are satisfied. Such sports training and competition activities include: butterfly stroke and diving starts in swimming, diving, pentathlon, high jump, squat lifts, equestrian sports, artistic gymnastics, football (soccer), alpine skiing and any warm-up exercise placing undue stress on the head and neck.
- 2) An athlete with Down syndrome may be permitted to participate in the activities described in subsection (1) above if that athlete is examined (including x-ray views of full extension and flexion of neck) by a physician who has been briefed on the nature of the Atlanto-axial instability condition, and who determines, based on the results of that examination, that the athlete does not have an Atlanto-axial instability condition.
- 3) An athlete with Down syndrome who has been diagnosed by a physician as having an Atlanto-axial instability condition may nevertheless be permitted to participate in the activities described in subsection (1) above if the athlete, or the parent or guardian of a minor athlete, confirms in writing his or her decision to proceed with these activities notwithstanding the risks created by the Atlanto-axial instability, and two (2) Licensed Medical Professionals certify in writing that they have explained these risks to the athlete and his/her parent or guardian, and that the athlete's

condition does not, in their judgment, preclude the athlete from participating in Special Olympics.  
**B. Statement of Eligibility (cont.)**

1. Flowchart to determine eligibility

The person is 8 years of age or older and is identified by a professional agency (or school, area agency, etc.) as;



**C. Uniform Specifications**

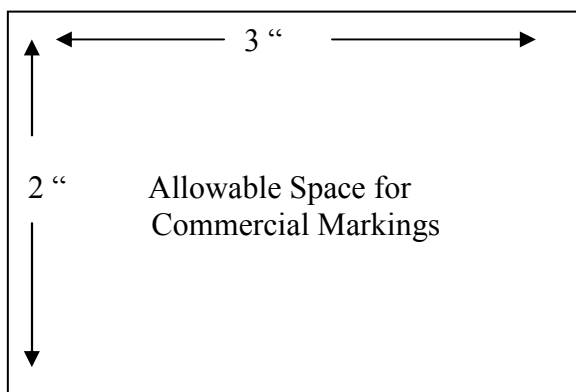
**Please note that this information may be useful when ordering Uniforms.**



Commercial Messages on Athlete Uniform and Competition Numbers In order to avoid commercial exploitation of persons with intellectual disabilities, no uniforms, and no bibs or other signs bearing competition numbers, that are worn by Special Olympics athletes during any competition or during any opening or closing ceremonies of any Games may be emblazoned with commercial names or commercial messages. The only commercial markings that may be displayed on athletes’ uniforms during Games competitions and opening and closing ceremonies are the normal commercial marking of the manufacturer.

For purposes of this discussion, “normal commercial markings” are limited to the following:

- a. On larger clothing items, such as shirts, jackets, pants, jerseys, and sweatshirts, one logo or commercial name per clothing item is permissible, if that name or display does not exceed an area of size square inches or about thirty-nine square centimeters (such as a display measuring 2” x 3” of 5.08 cm X 7.62 cm):
- b. On small clothing items, such as caps, socks, hats, gloves and belts, one logo or commercial name per clothing item is permissible, if that name or display does not exceed an area of three square inches in 19.35 square centimeters; and
- c. On athletic shoes, no logos or commercial names are permissible except for name and logos that are included in the manufacturer on athletic shoes that are sold to the general public.



\*\* Please note that in addition to commercial messages each sport may have specific guidelines to the size and location of numbers and team names ~ check under competition for sport specific recommendations.\*\*

**PLEASE PLEASE! CHECK ON LOGO GUIDELINES SECTION IX, PUBLIC RELATIONS WHEN ORDERING UNIFORMS ~ IF IN DOUBT CONTACT THE SPECIAL OLYMPICS WYOMING OFFICE AND THEY WILL REVIEW ART WORK FOR COMPLIANCE WITH LOGO GUIDELINES.**

#### D. Glossary

Application for Participation	Form for pertinent athlete information, including emergency contacts and medical alert conditions. Must be completed by a medical examiner <b><u>prior to participation</u></b> in Special Olympics.
Area	An area is one of five geographical divisions of the state. The area is made up of the local teams that are located in the geographical area.
Area Competition	Preliminary Competition prior to any of the State events. These provide additional competitive opportunities for athletes as well as entry scores for state competition.  Athletes must compete in Area Summer and Area Winter games prior to state events. Athletes are strongly encouraged to compete in Area Fall Tournaments, Softball Tournaments and Golf events prior to state competition also
Area Director	Responsible for the coordination of all aspects of Special Olympics Wyoming within a pre-determined geographical area of Wyoming.
Athlete	An individual with intellectual disabilities that trains for a minimum of 8 weeks and competes at least once per year in an Olympic-style competition with Opening and Closing Ceremonies at any level (local, area, state, national, regional, world).
“A” Volunteer	Any person who volunteers for Special Olympics Wyoming as a coach, chaperone, driver, overnight host, Unified Sports Partner or otherwise in a manner that results in regular close contact with Special Olympics athletes. Additionally, volunteers who may assume administrative or fiscal duties such as Committee Members, Event Directors or Board Members are considered “A” volunteers.
“C” Volunteer	“C” Category Volunteers are single event, one-day or walk-on volunteers who do not have direct responsibility or ongoing close contact with athletes.
Coach	The individual charged with training athletes in a specific sport.
Consent Form	Each athlete is required to submit a consent form in order to participate.
Division	The competitive grouping of 3-8 athletes based on age, ability and gender.
Local Program	A Local Program is a school, organization or training group made up of athletes registered within Special Olympics Wyoming.
Medical	Same as Application for Participation
Staging	The area used to collect athletes as they prepare to compete. This is used to place athletes into correct competitive heats or divisions.

- State Competition - Winter Games  
 - Summer Games  
 - Unified Sports® Golf Tournament  
 - G. Michael Perry Memorial Softball Tournament  
 - Fall Tournament.

Time Trials An event run at the same location as the competition to establish scores to division athletes for final competition.

Unified Sports® A program that combines approximately equal numbers of Special Olympics athletes with athletes without intellectual disabilities (partners) on sports teams for training and competition. Age and ability matching of athletes and partners is specifically defined on a sport by sport basis.

Unified Sports® Partner A person **without a intellectual disability** who trains in a Special Olympics sport and who competes at least once in a Special Olympics Games or competition at any level (local, area, state, regional, national, world) during the calendar year.

#### E. Alphabet Soup

ALP's	Athlete Leadership Programs	SOGII	Special Olympics Get Into It
BOD	Board of Directors	SOI	Special Olympics Inc.
DD	Developmental Disability	SONA	Special Olympics North America
FOT	Festival of Trees	SONG	Special Olympics National Games
GMS	Games Management Software	SOWY	Special Olympics Wyoming
GMT	Games Management Team	WHSAA	Wyoming High School Activities Association
ID	Intellectual Disability		
JHMR	Jackson Hole Mountain Resort	WLTC	World's Largest Truck Convoy
JJ	Jackalope Jump	YAC	Youth Activation Council
KMS	Knowledge Management System	YAP	Young Athlete Program
LETR	Law Enforcement Torch Run		
MATP	Motor Activities Training Program		
NGB	National Governing Body		
PDD	Pervasive Developmental Disability		
PGA	Professional Golf Association		
POC	Principles of Coaching		
PU	Project UNIFY		
SMT	Sports Management Team		
SSIP	Sports Skills Instructional Program		